

Technical data sheet



Product features

Electric stock pot stove 9,5 kW 400 V

Model	SAP Code	00007868
--------------	-----------------	----------



- Device type: Electric unit
- Power consumption of the zone 1 [kW]: 5
- Protection of controls: IPX4

SAP Code	00007868	Power electric [kW]	5.000
Net Width [mm]	568	Loading	400 V / 3N - 50 Hz
Net Depth [mm]	568	Number of zones	1
Net Height [mm]	530	Power consumption of the zone 1 [kW]	5
Net Weight [kg]	66.00		

Technical data sheet



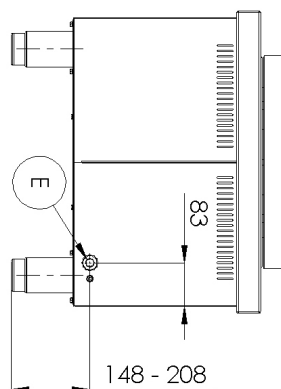
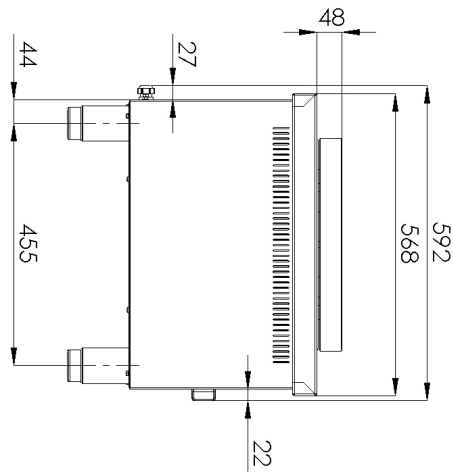
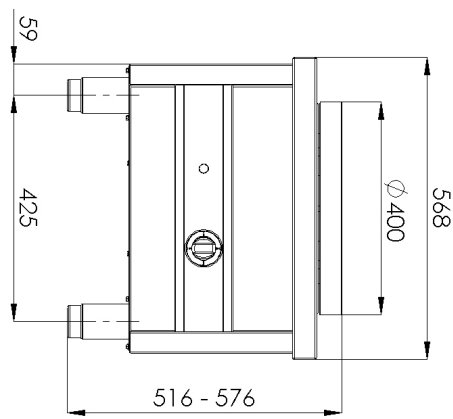
Technical drawing

Electric stock pot stove 9,5 kW 400 V

Model

SAP Code

00007868



Technical data sheet



Product benefits

Electric stock pot stove 9,5 kW 400 V

Model

SAP Code

00007868

1

All-stainless design except for the hotplate

only stainless steel intended for food contact is used

- absolutely rust-proof and non-magnetic design
- resists even weak acids easier compliance with hygiene standards (HACCP); easy maintenance and cleaning

2

Power 5 kW

high performance

- fast heat treatment

3

Plate diameter 400mm

large space for large pots

- possibility to heat large capacity pots

Technical data sheet



Technical parameters

Electric stock pot stove 9,5 kW 400 V

Model

SAP Code

00007868

1. SAP Code:

00007868

2. Net Width [mm]:

568

3. Net Depth [mm]:

568

4. Net Height [mm]:

530

5. Net Weight [kg]:

66.00

6. Gross Width [mm]:

630

7. Gross depth [mm]:

630

8. Gross Height [mm]:

650

9. Gross Weight [kg]:

74.00

10. Device type:

Electric unit

11. Power electric [kW]:

5.000

12. Loading:

400 V / 3N - 50 Hz

13. Protection of controls:

IPX4

14. Indicators:

operation

15. Worktop material:

AISI 304

16. Worktop Thickness [mm]:

1.00

17. Number of zones:

1

18. Power consumption of the zone 1 [kW]:

5

19. Maximum device temperature [°C]:

400

20. Minimum device temperature [°C]:

50

21. Number of power control stages:

4

22. Number of burners/hot plates:

1

23. Type of electric cooking zones:

Oval

24. Cross-section of conductors CU [mm²]:

1

- Výkon (kW): 3,7-5 (230 V); 6,4-8,7 (400 V)